

TORQUE OVERVIEW

GISMA
STECKVERBINDER
GMBH




DREHMOMENT-ÜBERSICHT
ELEKTRISCHE STECKVERBINDER FÜR
MEERES- UND MARINETECHNIK
BAUREIHE 10, 16, 22, 34, 35, 40, 51

TORQUE OVERVIEW
HIGH PERFORMANCE UNDERWATER
ELECTRICAL CONNECTORS
SERIES 10, 16, 22, 34, 35, 40, 51



Leinestraße 25
D-24539 Neumünster
Tel. +49 - 4321 - 98 35 - 30
Fax +49 - 4321 - 98 35 - 55
www.gisma-connectors.de
E-Mail: info@gisma-connectors.de


 <p>GISMA STECKERBINDER GMBH</p>	<p style="text-align: center;">Torque overview for series 10 / 16 / 22 / 34 / 35 / 40 / 51</p>	<p>Document: Torque Overview Series 10-16-22-34-35-40-51- Rev.37</p>
<p>Issue: 12.06.2026 Rev.-Index: 37 From: 24.02.2015</p>		<p>Copyright by: GISMA GmbH</p>

Content

1. General	3
2. General screw torque for metric screws	4
3. Mounting torque series 10 plug locking sleeve	5
3.1. Mounting torque series 10 fastening / jam nut	5
3.2. Mounting torques series 10 locking sleeve for GISMA endbells	6
3.3. Mounting torque series 10 & 22 press nut (calculated)	7
4. Mounting torque series 16	8
4.1. Mounting torque series 16 locking sleeve	8
4.2. Mounting torque series 16 oil hose adapter (to plug).....	8
4.3. Mounting torque series 16 hose fitting (to oil hose adapter)	8
4.4. Mounting torque series 16 moulding endbell.....	9
5. Mounting torque series 22 Pressure Hull Penetrator (PHP)	10
5.1. Mounting torques series 22 Jam Nut Receptacle	10
5.2. Mounting torques series 22 locking sleeve	11
5.3. Mounting torques series 22 locking sleeve for GISMA endbells.....	12
6. Mounting torque series 34	13
7. Mounting torque series 35	13
8. Mounting torque series 40 locking sleeve	13
9. Mounting torque series 51 locking sleeve	14
10. Mounting torque series 51 Pressure hull penetrator	14
11. Mounting torque for tube crimp terminals and crimp terminals DIN VDE 46235	15
12. Tools available by GISMA	16

GISMA Steckverbinder GmbH
Leinestraße 25
D-24539 Neumünster

Tel.: +49 (0)4321-9835-30
www.gisma-connectors.de

 GISMA STECKVERBINDER GMBH	Torque overview for series 10 / 16 / 22 / 34 / 35 / 40 / 51	Document: Torque Overview Series 10-16-22-34-35-40-51- Rev.37
		Copyright by: GISMA GmbH
Issue: 12.06.2026 Rev.-Index: 37 From: 24.02.2015		

GISMA ELECTRICAL & FIBRE OPTIC CONNECTORS - Torque overview for series 10 / 16 / 22 / 34 / 35 / 40 / 51

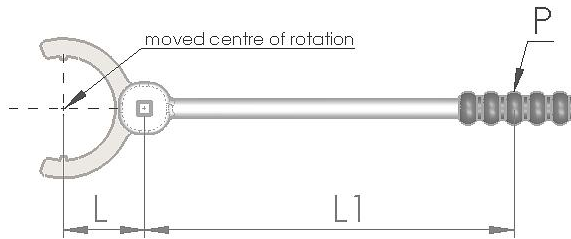
1. General

This document includes an overview of the torques for the locking nuts, pressure hull penetrator and jam nut receptacle fastening nuts and for the screws for the flange receptacles.

As hexagon wrench adapter (mainly series 10 and 35) we recommend a GISMA Torque-wrench no. 22.12.28 or 10.96.000

In combination with a hexagon wrench adapter with an offset (L) different to 32mm, the following calculation for the torque on the torque wrench has to be carried out.

In this case, **L** = (given offset) -32.



$$M_w = \frac{M \times L1}{L + L1}$$

P =	centre of handle
L1 =	centre of handle to centre of rotation (CR)
L =	centre of rotation to moved center of rotation (MCR)
M =	target torque
M _w =	wrench torque

For locking sleeves with grooves for hook wrench adapter (mainly series 22 and 40), we recommend a GISMA Torque-wrench no. 22.12.27.


The given torque values according table 5.3 are calculated for the GISMA hook wrench adapter and two kind of adjustable hook wrench adapter according the part-No in the table.

The given torque values are based on experience with new manufactured connectors. Based on the material combination, the greasing and the cleanness the torque values may vary.

Attention:

A final locking is reached, after a metal contact of the connector pairs.

For loosening the nut or locking sleeve, we recommend using a standard reversible ratchet, to prevent the torque-wrench from damage.

GISMA STECKVERBINDER GMBH		Torque overview for series 10 / 16 / 22 / 34 / 35 / 40 / 51	Document: Torque Overview Series 10-16-22-34-35-40-51- Rev.37
			Copyright by: GISMA GmbH
Issue: 12.06.2026 Rev.-Index: 37 From: 24.02.2015			

The hook wrench adapters have to be used in a straight line with the hook wrench, to reach the requested torques. (see picture below)




2. General screw torque for metric screws

The following table shows non-binding standard values for different friction-coefficients valid for screws and nut according DIN 912, 931, 933 and 934 / ISO 4762, 4014, 4017, 4032 made of stainless steel (e.g. 1.4404). The values are valid for the property class -70 with a nominal dimension 8 x d at 20°C and an offset yield stress of $R_p 0,2 = 90\%$.

The torque values in the table below are **rough and non-binding standard values** – see VDI 2230.

Fastening torque MA [Nm] for A4-70

Friction-coefficient [μ]	-70 = $R_p 0,2$ min. 450 N/mm ²							
	M4	M5	M6	M8	M10	M12	M16	M20
0,10	1,7	3,4	5,9	14,5	30	50	121	244
0,12	2,0	3,8	6,7	16,3	33	56	136	274
0,14	2,2	4,2	7,4	17,8	36	62	150	303
0,16	2,3	4,6	7,9	19,3	39	66	162	328
0,18	2,5	4,9	8,4	20,4	41	70	173	351
0,20	2,6	5,1	8,8	21,5	44	74	183	370
0,30	3,0	6,1	10,4	25,5	51	88	218	439
0,40	3,3	6,6	11,3	27,6	56	96	237	479

 GISMA STECKVERBINDER GMBH	Torque overview for series 10 / 16 / 22 / 34 / 35 / 40 / 51	Document: Torque Overview Series 10-16-22-34-35-40-51- Rev.37
		Copyright by: GISMA GmbH
Issue: 12.06.2026 Rev.-Index: 37 From: 24.02.2015		

3. Mounting torque series 10 plug locking sleeve

Mounting torques are valid for all materials.

Size	Mounting torque M for plug locking sleeves ²⁾	Wrench torque M _w ³⁾	Wrench size	mounting tool ¹⁾
1	23 ± 5 Nm	21 ± 5 Nm	26 mm	22.12.28 + 10.12.02
2	25 ± 5 Nm	22 ± 5 Nm	32 mm	22.12.28 + 10.12.04
3	27 ± 5 Nm	24 ± 5 Nm	34 mm	22.12.28 + 10.12.05
4	30 ± 5 Nm	26 ± 5 Nm	41 mm	22.12.28 + 10.12.07
5	33 ± 5 Nm	27 ± 5 Nm	55 mm	22.12.28 + 10.12.10
6	36 ± 5 Nm	29 ± 5 Nm	65 mm	22.12.28 + 10.12.14
7	225 ± 5 Nm	56 ± 5 Nm	100 mm	22.12.28 + 10.12.18
71	225 ± 5 Nm	56 ± 5 Nm	110 mm	22.12.28 + 10.12.19

¹⁾ Please also refer to GISMA document MB 10.12.XX

²⁾ For specific components please check the torques in the relevant dimensional drawing.

³⁾ adjusted torque value at the mounting tool


3.1. Mounting torque series 10 fastening / jam nut

Mounting torques are valid for all materials.

Size	Mounting torque M for fastening / jam nut	Wrench torque M _w ²⁾	Wrench size	mounting tool ¹⁾
1	45 ± 5 Nm	40 ± 5 Nm	27 mm	22.12.28 + 10.12.03
2	45 ± 5 Nm	40 ± 5 Nm	32 mm	22.12.28 + 10.12.04
3	55 ± 5 Nm	48 ± 5 Nm	36 mm	22.12.28 + 10.12.06
4	55 ± 5 Nm	47 ± 5 Nm	41 mm	22.12.28 + 10.12.07
5	65 ± 5 Nm	53 ± 5 Nm	55 mm	22.12.28 + 10.12.10
6	75 ± 5 Nm	60 ± 5 Nm	65 mm	22.12.28 + 10.12.14

¹⁾ Please also refer to GISMA document MB 10.12.XX


²⁾ adjusted torque value at the mounting tool

 GISMA STECKVERBINDER GMBH	Torque overview for series 10 / 16 / 22 / 34 / 35 / 40 / 51	Document: Torque Overview Series 10-16-22-34-35-40-51- Rev.37
		Copyright by: GISMA GmbH
Issue: 12.06.2026 Rev.-Index: 37 From: 24.02.2015		

3.2. Mounting torques series 10 locking sleeve for GISMA endbells

All torques are values for orientation

BR 10							
		0° Moulding Endbell		90° Moulding Endbell		120° Moulding Endbell	
Size	Locking thread	Mounting torque [Nm]	Hook wrench (adjustable)	Mounting torque [Nm]	Hook wrench (adjustable)	Mounting torque [Nm]	
		„Z“		„Y“		„X“	„W“
1	M19x0,5	M: 8 Nm ± 2 M _w : 00 Nm ± 2	22.12.20	14 Nm ± 2	22.12.25	BR 10/1 not in 120° angled	
2	M22x0,5	10 Nm ± 2	22.12.20	15 Nm ± 2	22.12.25	BR 10/2 not in 120° angled	
3	M27x0,5	11 Nm ± 2	22.12.20	16 Nm ± 2	22.12.25	16 Nm ± 2	22.12.25
	M22x1					13 Nm ± 2	22.12.20
4	M31x0,75	17 Nm ± 2	22.12.20	23 Nm ± 2	22.12.25	BR 10/4 not in 120° angled	
5	M45x0,75	25 Nm ± 2	22.12.20	28 Nm ± 2	22.12.26	BR 10/5 not in 120° angled	
6	M50x0,75	tbd	tbd	/	/	BR 10/6 not in 120° angled	
7	M85x1,5	tbd	tbd	/	/	BR 10/7 not in 120° angled	

 GISMA STECKVERBINDER GMBH	Torque overview for series 10 / 16 / 22 / 34 / 35 / 40 / 51	Document: Torque Overview Series 10-16-22-34-35-40-51- Rev.37
		Copyright by: GISMA GmbH
Issue: 12.06.2026 Rev.-Index: 37 From: 24.02.2015		

3.3. Mounting torque series 10 & 22 press nut (calculated)

Mounting torques are valid for all materials.

Size series 10	Size series 22	Mounting torque for Press nut	Torque meter	Hook wrench
1	0	4 + 1 Nm	22.12.39	10.90.004
2	/	5 + 1 Nm	22.12.39	
3	1 & 2	6 + 1 Nm	22.12.39	10.90.005
4	3	7 + 1 Nm	22.12.39	
5	4	11 + 2 Nm	22.12.39	10.90.006
6	5 & 7	14 + 2 Nm	22.12.39	


The structure, tolerance in diameter, material and screen termination of the different cables can affect the mounting torque of the press nut. We suggest that every cable shall be tested.

Attention:

The mounting torque has to be adjusted for coaxial cable assemblies!

For cables with massive variation in diameter the pinch cones may be adjusted!

Tighten elastic rubber cables with less torque than comparable more steady cables!

 GISMA STECKVERBINDER GMBH	Torque overview for series 10 / 16 / 22 / 34 / 35 / 40 / 51	Document: Torque Overview Series 10-16-22-34-35-40-51- Rev.37
		Copyright by: GISMA GmbH
Issue: 12.06.2026 Rev.-Index: 37 From: 24.02.2015		

4. Mounting torque series 16

4.1. Mounting torque series 16 locking sleeve

Mounting torques are valid for all materials.

Size	Mounting torque M for plug locking sleeves	Wrench torque M _w ²⁾	Wrench size	Mounting tool ¹⁾
3	42 + 5 Nm	36 + 5 Nm	45 mm	22.12.28 + 10.12.21
4	45 + 5 Nm	38 + 5 Nm	50 mm	22.12.28 + 10.12.22
5	49 + 5 Nm	39 + 5 Nm	65 mm	22.12.28 + 10.12.14
6	52 + 5 Nm	41 + 5 Nm	70 mm	22.12.28 + 10.12.25

4.2. Mounting torque series 16 oil hose adapter (to plug)

Mounting torques are valid for all materials.

Size	Locking thread	Mounting torque M ²⁾	Mounting tool ¹⁾
3	M 34 x 1	20 + 5 Nm	22.12.28 + 10.12.05
4	M 38 x 1	25 + 5 Nm	22.12.28 + 10.12.05
5	M 48 x 1	30 + 5 Nm	22.12.28 + 10.12.08
6	M 56 x 1	35 + 5 Nm	22.12.28 + 10.12.26


4.3. Mounting torque series 16 hose fitting (to oil hose adapter)

Mounting torques are valid for all materials.

Size	Locking thread	Hose size	Mounting torque M ²⁾	Mounting tool ¹⁾
3	M 25 x 1,5	½ "	40 + 5 Nm	22.12.28 + 10.12.20
4	M 32 x 1,5	¾ "	45 + 5 Nm	22.12.28 + 10.12.06
5	M 42 x 2	1 "	60 + 5 Nm	22.12.28 + 10.12.08
6	M 62 x 3	1 ½ "	80 + 5 Nm	22.12.28 + 10.12.23

¹⁾ Please also refer to GISMA document MB 10.12.XX

²⁾ adjusted torque value at the mounting tool

	Torque overview for series 10 / 16 / 22 / 34 / 35 / 40 / 51	Document: Torque Overview Series 10-16-22-34-35-40-51- Rev.37
		Copyright by: GISMA GmbH
Issue: 12.06.2026 Rev.-Index: 37 From: 24.02.2015		


4.4. Mounting torque series 16 moulding endbell

Mounting torques are valid for all materials.

Size	Locking thread	Mounting torque M ²⁾	Mounting tool ¹⁾
3	M 25 x 1,5	20 + 5 Nm	22.12.27 + 22.12.20
4	M 32 x 1,5	25 + 5 Nm	22.12.27 + 22.12.20 22.12.27 + 22.12.21
5	M 42 x 2	30 + 5 Nm	22.12.27 + 22.12.25
6	M 62 x 3	35 + 5 Nm	22.12.27 + 22.12.26

¹⁾ Please also refer to GISMA document MB 10.12.XX

²⁾ adjusted torque value at the mounting tool

 GISMA STECKVERBINDER GMBH	Torque overview for series 10 / 16 / 22 / 34 / 35 / 40 / 51	Document: Torque Overview Series 10-16-22-34-35-40-51- Rev.37
		Copyright by: GISMA GmbH
Issue: 12.06.2026 Rev.-Index: 37 From: 24.02.2015		

5. Mounting torque series 22 Pressure Hull Penetrator (PHP)

Material combination pressure hull penetrator stainless steel to locking nut bronze

Size	Locking thread of PHP	Torque for locking nut / castellated nut of PHP	wrench size	mounting tool for locking nut	mounting tool for castellated nut
1	M39x1	60 + 5 Nm	46 mm	22.12.28 + 22.94.001	22.12.27 + 22.94.020
2	M39x1	60 + 5 Nm	46 mm	22.12.28 + 22.94.001	22.12.27 + 22.94.020
3	M39x1	60 + 5 Nm	46 mm	22.12.28 + 22.94.001	22.12.27 + 22.94.020
4	M54x1	75 + 5 Nm	60 mm	22.12.28 + 22.94.002	22.12.27 + 22.94.021
5	M54x1	75 + 5 Nm	60 mm	22.12.28 + 22.94.002	22.12.27 + 22.94.021
	M70x1,5	90 + 5 Nm	80 mm	22.12.28 + 22.94.003	22.12.27 + 22.94.022
	M115x1,5	115 + 5 Nm		22.94.004	
7	M72x1,5	90 + 5 Nm	80 mm	22.12.28 + 22.94.003	22.12.27 + 22.94.022


5.1. Mounting torques series 22 Jam Nut Receptacle

Mounting torques are valid for all materials.

Size	Locking thread of jam nut receptacle	Torque M for locking nut of jam nut receptacle	Wrench torque $M_w^{2)}$	wrench size	mounting tool ¹⁾
1	M26x1	45 ± 5 Nm	40 ± 5 Nm	32 mm	tbd
2	M32x1	45 ± 5 Nm	39 ± 5 Nm	41 mm	tbd
3	M35x0,75	55 ± 5 Nm	47 ± 5 Nm	41 mm	tbd
4	M47x1	55 ± 5 Nm	45 ± 5 Nm	55 mm	tbd
5	M56x1	65 ± 5 Nm	52 ± 5 Nm	64 mm	tbd
7	M72x1,5	75 ± 5 Nm	57 ± 5 Nm	80 mm	tbd

¹⁾ Please also refer to GISMA document MB 10.12.XX

²⁾ adjusted torque value at the mounting tool

 GISMA STECKVERBINDER GMBH	Torque overview for series 10 / 16 / 22 / 34 / 35 / 40 / 51	Document: Torque Overview Series 10-16-22-34-35-40-51- Rev.37
		Copyright by: GISMA GmbH
Issue: 12.06.2026 Rev.-Index: 37 From: 24.02.2015		

5.2. Mounting torques series 22 locking sleeve

Mounting torques are valid for all materials.

For the material combination steel–steel, the use of the non-friction grease GISMA-FETT LP430 is strongly recommended.

Size	Mounting torque M outboard plug	Wrench torque M _w ²⁾ Outboard plug	GISMA hook wrench adapter ¹⁾
0	25 +3 Nm	21 +3 Nm	22.12.28 + 10.12.03
1	30 +3 Nm	25 +3 Nm	22.12.20
2	30 +3 Nm	24 +3 Nm	22.12.21
3	35 +5 Nm	28 +5 Nm	22.12.21
4	46 +5 Nm	37 +5 Nm 42 +5 Nm 43 +5 Nm	22.12.21 22.96.005 22.96.011+12
5	98 +5 Nm	78 +5 Nm	22.12.21
7	125 +5 Nm	99 +5 Nm 111 +5 Nm	22.12.21 22.96.006

¹⁾ Special endbells may require specific tools. Please check the relevant dimensional drawings.

²⁾ adjusted torque value at the mounting tool

Mounting torques are valid for all materials.

For the material combination steel–steel, the use of the non-friction grease GISMA-FETT LP430 is strongly recommended.


Size	Mounting torque M inboard plug	Wrench torque M _w ²⁾ inboard plug	GISMA hook wrench adapter ¹⁾
1	18 +3 Nm	14 +3 Nm	22.12.20
2	20 +3 Nm	15 +3 Nm	22.12.20
3	25 +5 Nm	20 +5 Nm	22.12.20
4	35 +5 Nm	28 +5 Nm 32 +5 Nm 33 +5 Nm	22.12.21 22.96.005 22.96.011+12
5	40 +5 Nm	32 +5 Nm	22.12.21
7	45 +5 Nm	35 +5 Nm 40 +5 Nm	22.12.21 22.96.007


¹⁾ Special endbells may require specific tools. Please check the relevant dimensional drawings.

²⁾ adjusted torque value at the mounting tool

5.3. Mounting torques series 22 locking sleeve for GISMA endbells

All torques are values for orientation

BR 22								
Size	Locking thread	Mounting torque [Nm]	Hook wrench (adjustable)	Mounting torque [Nm]	Hook wrench (adjustable)	Mounting torque [Nm]		Hook wrench (adjustable)
		„Z“		„Y“		„X“	„W“	
0	M19x0,5	8 Nm ± 2	22.12.20	14 Nm ± 2	22.12.25	14 Nm ± 2		22.12.25
						Endbell is a welding assembly		
1	M27x0,5	12 Nm ± 2	22.12.20	16 Nm ± 2	22.12.25	16 Nm ± 2		22.12.25
	M22x1						13 Nm ± 2	22.12.20
2	M27x0,5	12 Nm ± 2	22.12.20	16 Nm ± 2	22.12.25	16 Nm ± 2		22.12.25
	M22x1						13 Nm ± 2	22.12.20
3	M35x0,75	15 Nm ± 2	22.12.20	23 Nm ± 2	22.12.25	23 Nm ± 2		22.12.25
	M35x0,75						15 Nm ± 2	22.12.20
4	M45x0,75	25 Nm ± 2	22.12.20	28 Nm ± 2	22.12.26	28 Nm ± 2		22.12.26
	M45x0,75						16 Nm ± 2	22.12.20
5	M54x1	30 Nm ± 2	22.12.26	45 Nm ± 2	22.12.26	45 Nm ± 2		22.12.26
	M50x0,75						30 Nm ± 2	22.12.20
6	M64x1	tbd	22.12.26	Not realized		Not realized		
7	M68x1	35 Nm ± 2	22.12.26	55 Nm ± 2	22.12.26	55 Nm ± 2		22.12.26
	M50x0,75						45 Nm ± 2	22.12.25

 GISMA STECKVERBINDER GMBH	Torque overview for series 10 / 16 / 22 / 34 / 35 / 40 / 51	Document: Torque Overview Series 10-16-22-34-35-40-51- Rev.37
		Copyright by: GISMA GmbH
Issue: 12.06.2026 Rev.-Index: 37 From: 24.02.2015		

6. Mounting torque series 34

Mounting torques are valid for all materials.

Size	Mounting torque plug	Wrench torque $M_w^{2)}$	Wrench size	mounting tool ¹⁾
1	14 ±1 Nm	12 ± 1 Nm	30 mm	22.12.39 + 10.12.17
2	16 ±1 Nm	14 ± 1 Nm	34 mm	22.12.39 + 10.12.05

¹⁾ Please also refer to GISMA document MB 10.12.XX

²⁾ adjusted torque value at the mounting tool

7. Mounting torque series 35

Mounting torques are valid for all materials.

Size	Mounting torque plug	Wrench torque $M_w^{2)}$	Wrench size	mounting tool ¹⁾
2	10 ±1 Nm	9 ± 1 Nm	19 mm	22.12.39 + 10.12.01
3	12 ±1 Nm	11 ± 1 Nm	27 mm	22.12.39 + 10.12.03
			30 mm	22.12.39 + 10.12.17
4	14 ±1 Nm	13 ±1 Nm	36 mm	22.12.39 + 10.12.06

¹⁾ Please also refer to GISMA document MB 10.12.XX

²⁾ adjusted torque value at the mounting tool

Size	Mounting torque receptacle fastening nut	Wrench torque M_w	Wrench size	mounting tool
2	17 ±1 Nm	tbd	17 mm	tbd
3	30 ± 2 Nm	tbd	tbd	tbd
4	tbd	tbd	tbd	tbd


8. Mounting torque series 40 locking sleeve

Mounting torques are valid for all materials.

Size	Mounting torque outboard plug	Wrench torque $M_w^{2)}$ Outboard plug	GISMA hook wrench adapter ¹⁾
0	15 +3 Nm	13 +3 Nm	22.12.20
1	20 +3 Nm	17 +3 Nm	22.12.20
2	25 +3 Nm	20 +3 Nm	22.12.21
3	30 +5 Nm	24 +5 Nm	22.12.21
4	45 +5 Nm	36 +5 Nm	22.12.21
		41 +5 Nm	22.96.005
		42 +5 Nm	22.96.011+12
5	60 +5 Nm	47 +5 Nm	22.12.21
7	80 +5 Nm	63 +5 Nm	22.12.21
		71 +5 Nm	22.96.006

¹⁾ Special endbells may require specific tools. Please check the relevant dimensional drawings.

²⁾ adjusted torque value at the mounting tool

	Torque overview for series 10 / 16 / 22 / 34 / 35 / 40 / 51	Document: Torque Overview Series 10-16-22-34-35-40-51- Rev.37
		Copyright by: GISMA GmbH
Issue: 12.06.2026 Rev.-Index: 37 From: 24.02.2015		

9. Mounting torque series 51 locking sleeve

Mounting torques are valid for all materials.

Size	Mounting torque Outboard plug	Wrench size
1	18 ± 3 Nm	27 mm

10. Mounting torque series 51 Pressure hull penetrator


Mounting torques are valid for all materials.

Size	Mounting torque Pressure hull penetrator	Wrench size
1	30 ± 2 Nm	24 mm
1	40 ± 2 Nm	32 mm

11. Mounting torque for tube crimp terminals and crimp terminals DIN VDE 46235

Screw and torque	Order-No. of tube crimp terminal
Cheese head screw DIN 7984-M4 Torque 4,5+0,5 Nm	99.9.001.00 *
	99.9.002.00 *
	99.9.004.00 *
	99.9.006.00 *
	99.9.010.00 *
	99.9.016.00 *
	99.9.025.00 *
	99.9.025.03 *
	99.9.035.00 *
	99.9.050.02 *
	99.9.070.00 **
	99.9.095.00 *
	99.9.025.11 ***
	99.9.035.11 ***
	99.9.050.11 ***
99.9.070.11 ***	
Cheese head screw DIN 1207-M2,5 Torque 0,6+0,1 Nm	99.9.001.04 *
	99.9.002.04 *
	99.9.004.04 *
	99.9.006.04 *
	99.9.010.04 *
Cheese head screw DIN 7984-M8 Torque 10+2 Nm	99.9.120.01 ***
	99.9.185.01 ***
	99.9.240.01 ***
	99.9.070.12 ***
	99.9.095.12 ***
	99.9.120.12 ***
	99.9.150.12 ***
	99.9.185.12 ***
99.9.240.12 ***	

*** = Material

 GISMA STECKVERBINDER GMBH	Torque overview for series 10 / 16 / 22 / 34 / 35 / 40 / 51	Document: Torque Overview Series 10-16-22-34-35-40-51- Rev.37
		Copyright by: GISMA GmbH
Issue: 12.06.2026 Rev.-Index: 37 From: 24.02.2015		

12. Tools available by GISMA

Torque meter: Rahsol TORCOFIX K 4550-10 Order-No.: 22.12.27



Torque wrench SE 9 x 12, 2-25 Nm	Order-No.:	22.12.39
Torque wrench SE 9 x 12, 20-100 Nm	Order-No.:	22.12.28
Torque wrench SE 14 x 18, 40-200 Nm	Order-No.:	10.96.000



Adjustable hook wrench Ø20-42mm for ½" torquemeter	Order-No.:	22.12.20
Adjustable hook wrench Ø45-90mm for ½" torquemeter	Order-No.:	22.12.21



22.12.20 → L = 100mm
 22.12.21 → L = 150mm

Adjustable hook wrench Ø35-60mm for ½" torquemeter	Order-No.:	22.12.25
Adjustable hook wrench Ø60-90mm for ½" torquemeter	Order-No.:	22.12.26



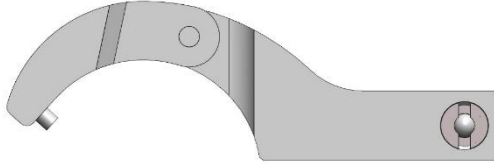
22.12.25 → L = 75 mm
 22.12.26 → L = 100 mm

Adjustable hook wrench adapter Ø22-35mm for Torque wrench SE 9 x 12

Order-No.: 10.90.005

L = 52 mm

Pin Ø: 3 mm

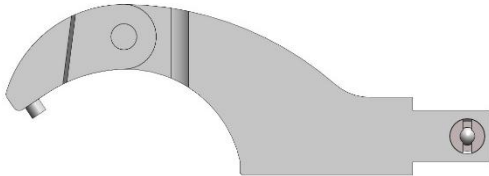


Adjustable hook wrench adapter Ø35-60mm for Torque wrench SE 9 x 12

Order-No.: 10.90.006

L = 85 mm

Pin Ø: 4 mm



Hook wrench adapter 1/2" Series 22+40 size 4

Order-No.: 22.96.005

22.96.005 → L = 55mm



Hook wrench adapter 1/2" Series 22+40 size 1
90° Endbell for small installation environment

Order-No.:

22.96.024

22.96.025



22.96.024 → L = 29mm



22.96.025 → L = 29mm

Hook wrench adapter 1/2" Series 22+40 size 4
90° Endbell for small installation environment

Order-No.:

22.96.011
22.96.012



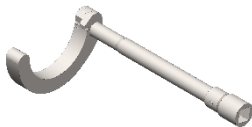
22.96.011 → L = 37mm

22.96.012 → L = 37mm

Hook wrench adapter 1/2" Series 22+40 size 5
90° Endbell for small installation environment

Order-No.:

22.96.020
22.96.021



22.96.020 → L = 43mm

22.96.021 → L = 43mm

Hook wrench adapter 1/2" Series 22 size 7 outboard plug Order-No.:

22.96.006

22.96.006 → L = 70,25mm



Hook wrench adapter 1/2" Series 22 size 7 inboard plug Order-No.:

22.96.007

22.96.007 → L = 65mm



Torque overview for series
10 / 16 / 22 / 34 / 35 / 40 / 51

Standard hook wrench for locking sleeve Series 22 and 40 size 0 to 7.



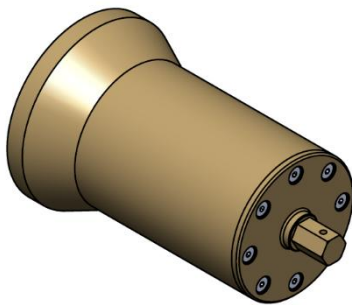
- 22.12.04 → for ø20- 35mm
- 22.12.05 → for ø35- 60mm
- 22.12.06 → for ø60- 90mm
- 22.12.08 → for ø90-155mm

Standard hook wrench with pin for locking sleeve Series 10 and 22 size 0 to 7



- 22.12.09 → for ø16-22mm
- 22.12.01 → for ø22-35mm
- 22.12.02 → for ø35-60mm
- 22.12.07 → for ø60-90mm
- 22.12.03 → for ø90-155mm

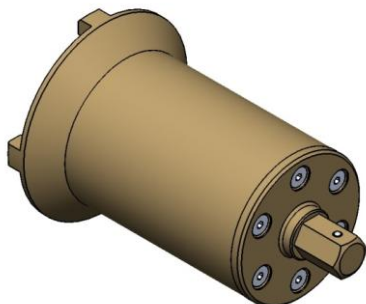
Pipe spanner for mounting the PHP series 22



- 22.94.001 → for size 1-3
- 22.94.002 → for size 4-5
- 22.94.003 → for size 7

Adapter nut (AF 14) is necessary.

Mounting tool for castellated nut for mounting the PHP series 22
(Alternative for pipe spanner)



- 22.94.020 → for size 1-3
- 22.94.021 → for size 4-5
- 22.94.022 → for size 7

Adapter nut (AF 14) is necessary.

GISMA

STECKVERBINDER
GMBH



Wir beantworten gerne Ihre Fragen und bieten Ihnen eine kompetente Beratung sowie fachspezifische Lösungen für Ihren speziellen Anwendungsfall.

We gladly answer your questions and provide you with expert advice and subject specific solutions.



Leinestraße 25

D-24539 Neumünster

Tel. +49 - 4321 - 98 35 - 30

Fax +49 - 4321 - 98 35 - 55

www.gisma-connectors.de

E-Mail: info@gisma-connectors.de